

Hi, we'd like to introduce you to Berry Architecture's first newsletter for the new Westpark Middle School project. Our goal is to keep you up to date on what's going on with the project. The past few months have been busy ones, so we'll just share a few of the highlights. We'll continue to update you periodically on the progress of the project—stay tuned!

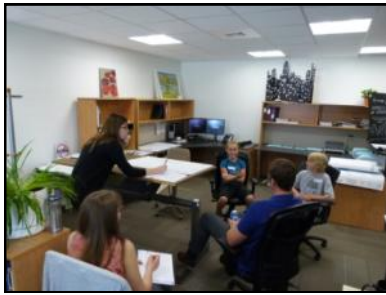


Westpark Middle School

# Project Newsletter

## Student Design Charette

On June 8th, Berry Architecture invited the WMS Student Design Team, RDPDS representatives, school trustees, and engineering consultants to a design charette—a brainstorming session of ideas for the design of the new school. We gathered some great insights and design input from everyone who attended the event, but we especially benefited from the energy and enthusiasm of our student designers. Sessions included work with all consultants, including architectural, mechanical, structural, electrical, civil, interior design, LEED®, and landscaping.



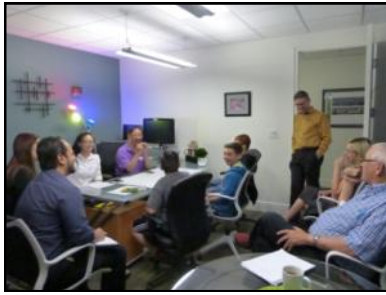
Architectural Session



Mechanical Session



Structural Session



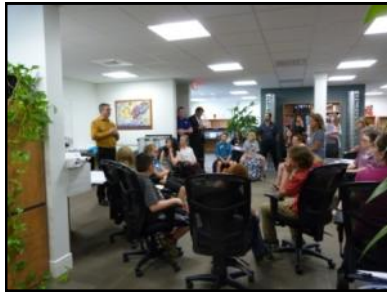
Electrical Session



Civil Session



Interior Session



Overall Discussion



LEED® Session



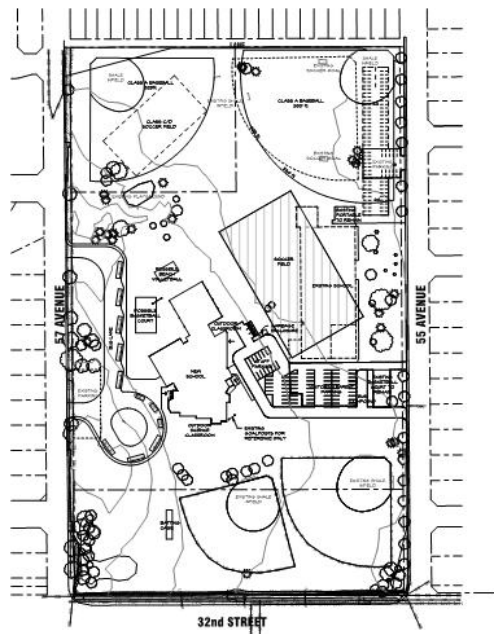
Landscaping Session

FYI: LEED® stands for "Leadership in Energy and Environmental Design" and is a green rating system for buildings. The new school will be designed and built to attain a minimum rating of LEED® Silver.

## Design Committee

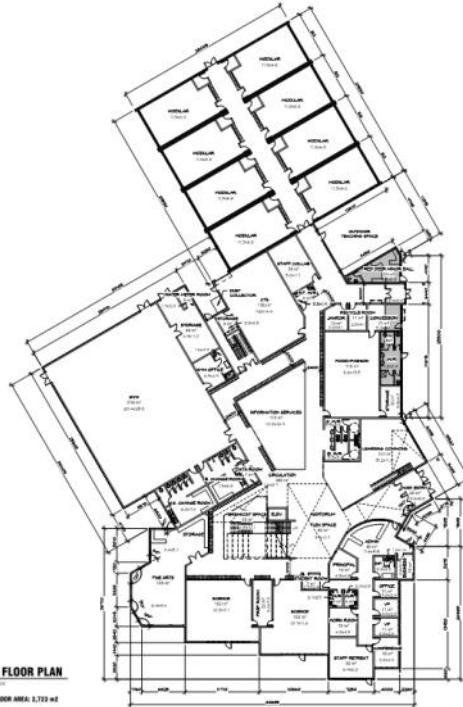
We have a very hardworking and creative design committee working with us on the project. It's made up of the student committee members, school trustee representatives, RDPDS representatives, school administration, teacher representatives, parent representatives, and Berry Architecture team members. The WMS student design committee has been active since the project began in the previous school year. This year, we are meeting with the students monthly during flex time.

## Overall Site Plan



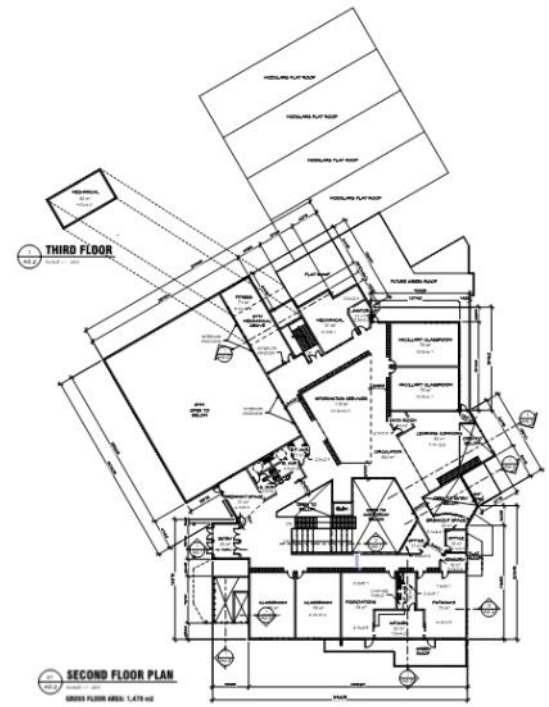
OVERALL SITE PLAN

## Main Floor Plan



MAIN FLOOR PLAN  
MAIN FLOOR AREA: 1,729 sq ft

## Second Floor Plan



SECOND FLOOR PLAN  
SECOND FLOOR AREA: 1,476 sq ft

Here's a peek at the schematic design plans for the site, main floor, and second floor. They provide an idea of the general layout of the site and school configuration. We're really excited about the design and all the unique educational features and opportunities that will be incorporated into the new school.

