

## Volume 1, Issue 3

Here's the third installment of Berry Architecture's Westpark Middle School project newsletter. We are so pleased to be attending the sod-turning and construction kick-off for the new school on October 4<sup>th</sup>, 2017! Construction completion will be Summer of 2019 for school opening in September. Demolition of the existing school will take place after the new school is occupied.



# Project Newsletter

## Construction Update

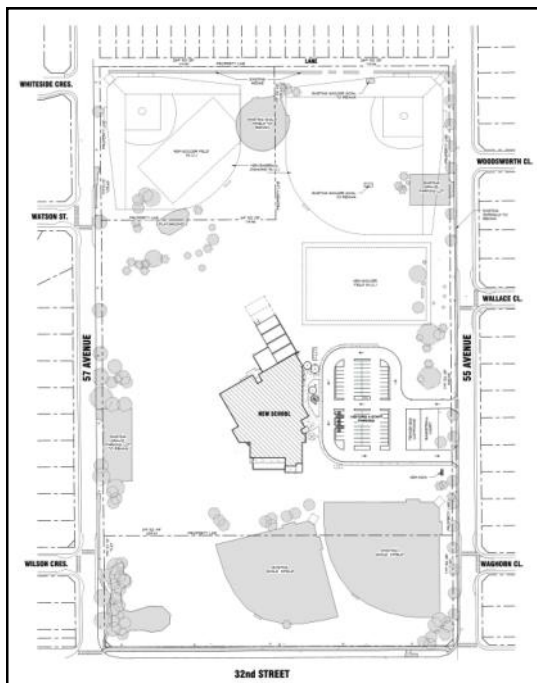
The new Westpark Middle School underwent cost saving measures over the summer and was re-tendered to the five pre-qualified general contractors in August/September. The construction contract has been awarded to Shunda Consulting & Construction Management Ltd., a highly experienced local contractor.



East Elevation

## New Design

The project cost savings undertaken between the first and second design included simplifying the central auditorium area, moving the new school 25 m to the east to reduce impact on the site, locating the bus drop off lane around the parking lot on the east side of the site, and changing four planned modular classrooms into permanent construction. The original design intent of the entire school functioning as a learning environment remains intact as does the environmental plan for a LEED Gold building. As you can see, the overall appearance of the school has been maintained and was impacted very little by the cost saving measures. Dimensions of the new school are: main floor (including community spaces and modulars) - 3,376 m<sup>2</sup> (36,340 ft<sup>2</sup>); second floor - 1,713 m<sup>2</sup> (18,439 ft<sup>2</sup>); and third floor - 88 m<sup>2</sup> (947 ft<sup>2</sup>).



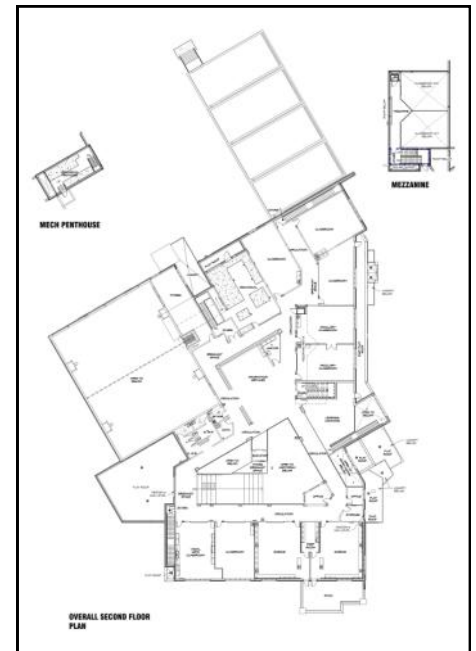
Site Plan



Southeast Elevation



Main Floor Plan



Second Floor Plan

## Community Partnerships

The new Westpark Middle School will incorporate a number of community partnerships, including a concession and exterior washrooms for community use, funded by the City of Red Deer; an office for Red Deer Minor Baseball; and a third floor teaching/observation mezzanine for Red Deer College. These partnerships will be beneficial to both the school and the community and will be important ongoing elements of the school and site for many years to come.



Southwest Elevation

## Student Design Committee

The Student Design Committee will continue working with Berry Architecture throughout the construction process. Shunda Consulting & Construction and the sub-trades will also be involved with the committee on an ongoing basis. The current structure of the Student Design Committee will evolve once construction has started. Stay tuned for more details!

